

Your invitation to
Georgia Chamber Music Retreat
June 13-15, 2025
Piedmont University, Demorest, GA

You are invited to the annual Georgia Chamber Music Retreat on the beautiful Piedmont University campus. From Friday evening until Sunday afternoon, about 100 musicians gather for a spring weekend of chamber music, food, and fun. Please join us this year.



The weekend begins before dinner on Friday, June 13th and ends on Sunday afternoon, June 15th, 2025. **Once you have arrived, you are expected to stay for the entire weekend.** During the weekend, our focus is on sight-reading music in small chamber ensembles. This is not a workshop: No instruction is offered, and practicing is highly discouraged. ☺ We play for the joy of making music together and to get away from teaching, gigging, or simply leading our lives. The attendees are usually a mix of amateur and professional musicians and teachers.

Piedmont University is a beautiful 300-acre residential campus nestled in the foothills of the north Georgia mountains. The Piedmont Conservatory of Music includes a concert hall with adjustable acoustics, a grand foyer, acoustically isolated teaching studios, classrooms, and 27 Steinway pianos. We have the entire music conservatory and the campus chapel for our exclusive use, and we have the Piedmont Village off-campus housing all to ourselves.

Bring your instrument(s), casual clothes, recreational equipment (frisbees, bicycles, etc.) and any chamber music you have access to (don't worry if it is not for your instrument). To ensure that we have an appropriate mix of instruments, sections are expanded evenly as they fill. Those who attended last year get the first opportunity to return, so you may be placed on a waiting list until March 15th, when previous attendees must decide. **Many sections fill quickly.** Be sure to let us know as soon as possible whether you can come. When a spot is available, I will ask for a deposit to hold it.

I have been able to keep the cost of the retreat low to make it more affordable, especially for practicing musicians who might not otherwise afford to get away. The cost of the weekend this year is a flat \$225 per person, which includes two nights plus six meals. See *Accommodations* on the next page.



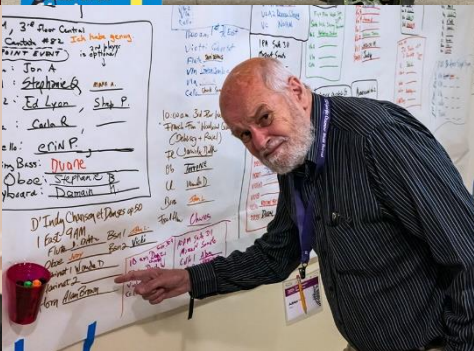
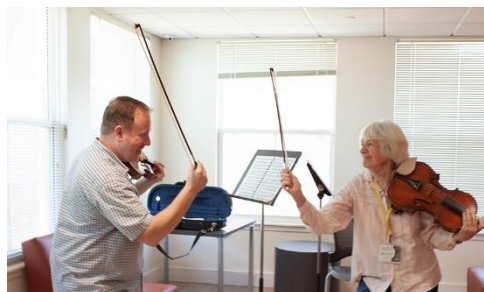
Reservations are made on a first-come, first-served basis. Once a spot is available, hold it by sending the \$50 non-refundable deposit via PayPal or Venmo to peterwh@peterwh.com (please select "Sending to a friend" to avoid fees) or a check made payable to Peter Hildebrandt to the address below. Further information, driving directions, and a final payment reminder will be sent to you in late April or early May. The remainder of the cost is due three weeks prior to the event (Friday, May 23rd). No profit is made on the retreat.

I hope you will accept this invitation and join us this spring.

I look forward to your response!

Questions? Contact:

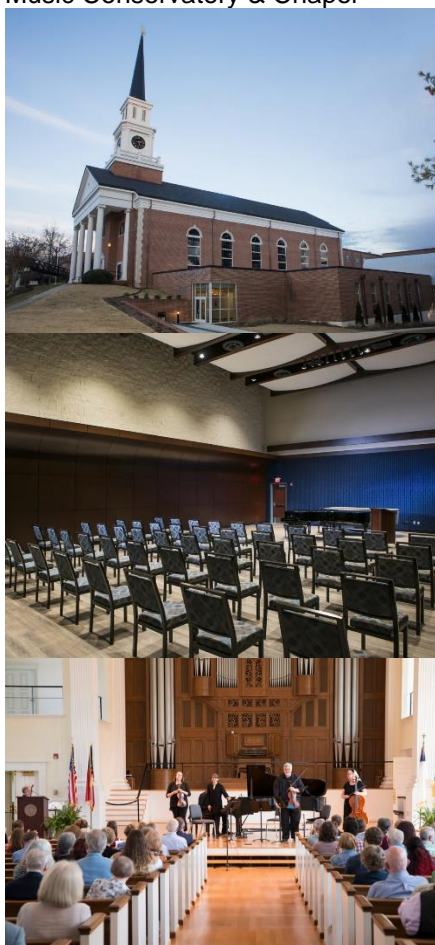
Peter Hildebrandt
244 Southern Hill Drive
Johns Creek, GA 30097
(770) 540-2402 C
peterwh@peterwh.com



Piedmont Village



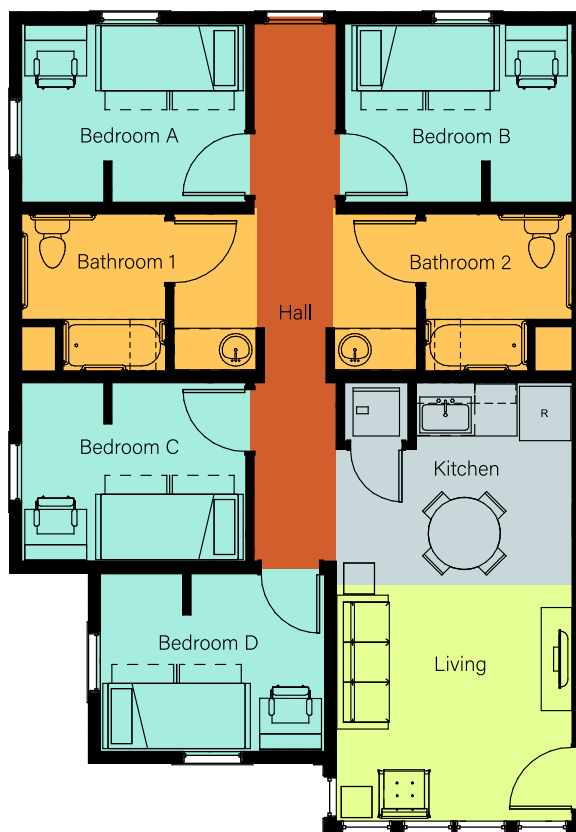
Music Conservatory & Chapel



Accommodations

Georgia Chamber Music Retreat June 13-15, 2025

We have exclusive use of the Piedmont Village, brand new apartment-style dorms located a five-minute drive from the music conservatory. Each suite has four single rooms, two bathrooms, a kitchen with fridge and microwave, and a modest living room. **Alcohol is permitted** in these dorms.



Reservations for room assignments are made on a first-come, first-served basis.

Linens and six meals are included (Friday dinner through Sunday lunch). Dining is in the Student Commons which has a full-time salad bar, pizza bar, and grill, plus hot meals which rotate. I can accommodate special dietary restrictions with advanced notice.

| Room type | Cost for the entire weekend | Non-refundable Deposit | Final Payment |
|-----------|-----------------------------|------------------------|---------------|
| Single | \$225 | \$50 | \$175 |

Our playing spaces are in the Piedmont Conservatory and adjoining Camp Hall, with plenty of rooms (most of which have Steinway pianos!). We also have use of the chapel for any larger groups and our informal concert on Sunday.

There is a contest to see who can play with the most other people. Previous year's winners have been well rewarded. (Hint, hint.) So, come prepared to play and enjoy!

